

Head Office:
Dixon Kelley Estate Agents
1 Penn Court
Station Road, West Moors
Dorset. BH22 0JJ

DORSET PARK HOMES

DRAFT

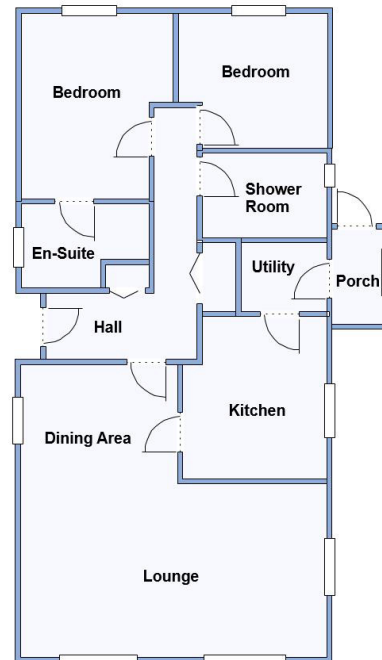
www.dorsetparkhomes.com

Telephone: 01202 877511

71 The Avenue, Oaktree Park, St Leonards, Ringwood. BH24 2RJ



Popular 'Pet Friendly' Park



This drawing has been prepared for diagrammatic

2-Bedroom Park Home - approx 42' x 20'

Accommodation & approximate room dimensions:

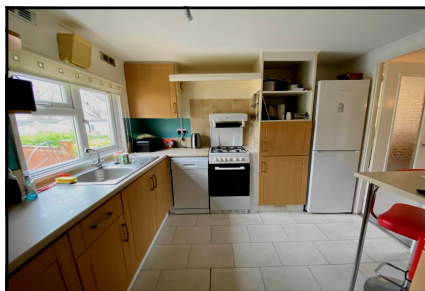
- Omar 'Sheringham' Park Home circa 1988
- Hall: Linen cupboard & Cloaks cupboard
- Kitchen: approx 10'6" x 9'2". Range of floor & wall cupboards. Fitted cooker. Space for fridge/freezer & dishwasher.
- Utility Room: Plumbing for washing machine. Gas combination gas boiler. Door to Rear Porch.
- Lounge: approx 19'5" x 11'3". Feature bay windows.
- Dining Area: approx 9'9" x 7'4".
- Bedroom 1: approx 12' x 9'4" max. Forest view.
- En-Suite Bathroom: Panelled bath, wash basin & WC.
- Bedroom 2: approx 9'4" x 8'8" max. Forest view.
- Shower Room: Corner shower with electric shower fitted. Vanity wash basin & WC. Chrome towel rail.
- Gas Central Heating (system untested)
- PVCu Double-Glazing
- Patio Garden with 2 Metal Sheds. Gate to forest
- Parking on Plot
- Age Restriction 50+ Pets Considered
- Popular, well maintained Residential Park with active Members Club.

Price: £155,000

VIEWING STRICTLY BY APPOINTMENT WITH THE VENDOR'S AGENT Dorset Park Homes 01202 877511

IMPORTANT NOTE: These particulars are believed to be correct but their accuracy is not guaranteed. They do not form part of any contract. Nothing in these particulars shall be deemed to be a statement that the property is in good structural condition or otherwise, nor that any of the services, appliances, equipment or facilities are in good working order or have been tested. Purchasers should satisfy themselves on such matters prior to purchase Ref.W04709

Spacious Home with Forest View



Pitch Fee: approx £208.24 per month

Subject to Annual Review

Council Tax Band: 'A'

Tenure: 1983 Mobile Homes Act Agreement

The recommended specialist in Park Home sales
Partner: Simon Dixon

